

[View this email in your browser](#)

## News, Opportunities and Deadlines for January 2018

---

### 6th Annual LA Conference on Computational Biology & Bioinformatics



---

LBRN new website is opened now !

**New LBRN Logo**

LBRN Louisiana Biomedical Research Network

About People Research Resources Events

f t v Newsletter

**Navigation bar**

**27 Member Campuses Across the State**

**Latest news**

**NEWS**

**LBRN 16th Annual Meeting**  
January, 10 2018  
Information and Registration available for the LBRN 2018 Annual Meeting Event held in Shreveport, Louisiana at the LSUHSC-Shreveport.  
[VIEW FULL STORY](#)

**5th Annual LA Conference on Computational Biology and Bioinformatics**  
April, 17 2017  
We are happy to announce that the 5th Annual Louisiana Conference on Computational Biology and Bioinformatics will be held on April 7 and 8, 2017 at Xavier University.  
[VIEW FULL STORY](#)

**FY 2017 IDeA Co-funding Initiative**

**EVENTS**

**Coming/ongoing events**

20 JUN	LBRN 2017 Summer Program Seminar 9:00am to 12:00pm
13 JUN	LBRN 2017 Summer Program Seminar 9:00am to 12:00pm
06 JUN	LBRN 2017 Summer Program Seminar 9:00am to 12:00pm
30 MAY	LBRN 2017 Summer Program Seminar 9:00am to 12:00pm
23 MAY	LBRN 2017 Summer Program Orientation 10:00am to 12:00pm

## 2018 LBRN Annual Meeting

Louisiana Biomedical research Network presents

# LBRN 16TH ANNUAL MEETING



**JANUARY 26–28, 2018**

Register at [lbrn.lsu.edu/events/annual-meeting](http://lbrn.lsu.edu/events/annual-meeting)

## LSU HEALTH SCIENCES CENTER IN SHREVEPORT

1501 Kings Hwy, Shreveport, LA 71103

**ALL DEADLINES ARE  
JANUARY 5TH, 2018**

Awards and prizes will be given for the best oral and poster presentations including full and pilot projects and graduate and undergraduate student research.

Registration, hotel reservations, and mandatory submission of all abstracts for both oral and poster presentations

The 2018 LBRN Annual Meeting will be held at the LSU Health Sciences Center in Shreveport.

Please see below for additional information.

- What: **2018 LBRN Annual Meeting**
- When: **January 26 – 28, 2018**
- Where: **LSU Health Shreveport**

Additional information is in the [LBRN webpage](#). Please check the LBRN website periodically for additional information.

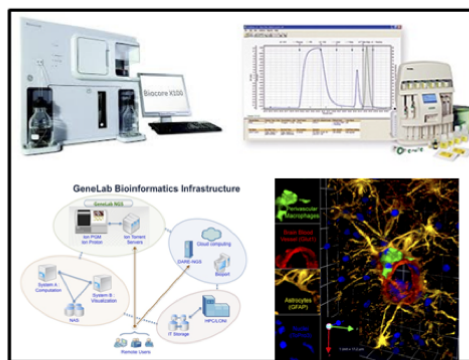




## Louisiana Biomedical Research Network

The [Louisiana Biomedical Research Network \(LBRN\)](#) program is a NIH funded program that aims to increase the quality and quantity of biomedical research activities throughout the State of Louisiana with an emphasis on building research capacity and workforce development. The LBRN program currently supports seven Predominantly Undergraduate Institutions, including three HBCUs, and partnering with Louisiana's IDeA-CTR the Louisiana Clinical and Translational Science Center (LA CaTS) to provide translational research opportunities for PUI faculty.

- The LSU Flagship provides state of the art core services in the field of Bioinformatics Biostatistics and Computational Biology, by providing training and access via the LONI network to High-end **Bioinformatics and High Performance Computing** servers such as the Delta Computer and the Super Mic. The Molecular Cell Biology Research Resources core provides, training, access to state of the equipment for carrying out molecular biology research including **High-end Confocal Microscopy, FACS and Electron Microscopy and NexGen Sequencing**.
- The LBRN has supported more than **65** individual Faculty Led Research projects since 2010, resulting in more than **350** research Presentations and Publications.
- Since 2010, the LBRN Summer Research Program has supported more than **40 Faculty members, 50 Graduate Students** and **237 Undergrad students**.







National Institutes  
of Health

## IDeA Co-funding Initiative invites R01 & R15 submissions from NIH ICs

- The applications must be investigator-initiated and from institutions in IDeA-eligible states that were deemed meritorious in initial peer review, but are beyond the IC's payline.
- The NIH ICs that have the primary assignment for the applications determine which of the applications they will nominate and send to NIGMS for consideration.

Investigators that are interested in their applications being considered for IDeA Co-funding should talk with the application's Program Officer (PO) about their interest in this program. The deadline for nominations this year is COB April 6, 2018.

Rashada Alexander serves as the NIGMS/IDeA point of contact for this initiative and can be reached by phone [301-451-6416](tel:301-451-6416) or email below with any questions about the program.

[Email Questions to Rashada Alexander, NIGMS/IDeA Point of Contact](#)

---

## BBC Core Educational Resource



The BBC Core provides introductory educational lecture series on informatics topics that are recorded and streamed. Prior offerings that are available for on demand streaming include;

- An Introduction to Computers and Informatics in the Health Sciences

<http://metagenomics.lsuhsu.edu/lectures/introinformatics/>

- An Introduction to Microbial Community Sequencing and Analysis

<http://metagenomics.lsuhsu.edu/lectures/intromicrobiota/>

On demand streaming links are available by each lecture along with downloadable lecture slides.

---

## LONI HPC Allocation for LBRN



We are happy to announce that High Performance Computing allocation for supporting LBRN/BBC Core community from the LONI HPC system.

This can be utilized in lieu of individual investigators having to apply for and acquire their own allocations to access the HPC resources. If any of your campus members need access to high performance computing, please have them interface with [Dr. Nayong Kim](#).

---

## CFA for Short Term Core Projects



Molecular Cell Biology Research Resources Core (**MCBRC**) and Bioinformatics, Biostatistics, and Computational Biology Core (**BBCC**) are calling for proposals to carry out short term projects in collaboration with the Cores. All LBRN researchers can submit a proposal for a defined project that can be carried out in collaboration with the Core facilities listed in the attached Call for Proposals (CFP) on a competitive basis. Each selected project will be allocated \$1,500 to fully or partially offset Core expenses. More details can be found in the

attached CFP.

[More details can be found in the attached CFP.](#)

---

## NIH Extramural Nexus (NIH/OD)



### • Continuing to Strengthen Inclusion Reporting on NIH-funded Phase III Trials

Much has been learned about how sex and race may contribute to differences in health outcomes and physiologic conditions ([Clayton, 2014](#)). We know that, for example, a [specific drug used to treat insomnia requires different dosing for women](#) and men. African Americans with hypertension are more susceptible to stroke than whites with the same blood pressure levels ([Howard, 2013](#)). But in many cases, findings from potentially informative stratified analyses may not be widely available. Less than a third of NIH studies required to analyze sex/gender and race/ethnicity have been found to publish sex-stratified results in peer-reviewed journals ([Foulkes, 2011](#)).

Last month, we amended our inclusion policy to enhance the public reporting of these sex/gender and race/ethnicity inclusion data ([NOT-OD-18-014](#)). With backing from the 21<sup>st</sup> Century Cures Act, this amendment specifically requires reporting the results of “valid analyses” on sex/gender and race/ethnicity to ClinicalTrials.gov after completing an [applicable](#) NIH-defined Phase III clinical trial.

- “[Valid analyses](#)” refers to stratified analyses that explore how well the intervention works among sex/gender and racial/ethnic groups. Though they may or may not be powered studies, they can still shed light on important trends informing the direction for future research questions.
- Applicable clinical trials, in general, study Food and Drug Administration-regulated therapeutics, biologics, and devices. The reporting requirement we are discussing today pertains to a subset of applicable clinical trials that are also known as “[NIH-defined Phase III clinical trials](#),” which are studies that evaluate an intervention in large groups of people by comparing the intervention to other standard or experimental interventions. NIH funds approximately 600 of these types of trials each year.

[...Continue reading](#)



- **Further Refining Case Studies and FAQs about the NIH Definition of a Clinical Trial in Response to Your Questions**

In [August](#) and [September](#) we released case studies and FAQs to help those of you doing human subjects research to determine whether your research study meets the NIH definition of a clinical trial. Correctly making this determination is important to ensure you are following the [initiatives we have been implementing to improve the transparency of clinical trials](#), including the [need to pick clinical trial -specific funding opportunity announcements](#) for due dates of January 25, 2018 and beyond.

We have made no changes to the [NIH definition of a clinical trial](#), or how the definition is interpreted. What we have done is revise existing [case studies](#) and add a few new ones to help clarify how the definition of clinical trial does or does not apply to: studies of delivery of standard clinical care, device studies, natural experiments, preliminary studies for study procedures, and studies that are primarily focused on the nature or quality of measurements as opposed to biomedical or behavioral outcomes.

[...Continue reading](#)

## **Top Stories**

---

- **Due Dates on Holidays/Weekends/NIH Office Closures**

With winter weather upon us, remember that when a due date falls on a weekend, [Federal holiday](#), or when Washington, D.C.-area Federal offices close (due to severe weather, for example), the application deadline is automatically extended to the next business day. See NIH Guide Notice [NOT-OD-17-041](#) for additional details. If you suspect Federal offices in D.C. are closed due to severe weather you can check [OPM.gov](#) to verify. Only when Federal offices in the Washington, D.C. area are listed as “Operating Status: CLOSED” is the application deadline automatically extended to the next day.

If your local winter weather is severe and results in the closure of your institution, then [NIH submission policies](#) regarding [weather/other disasters](#) apply.

- **Reminder: Changes for January 25, 2018 Application Due Dates**

Two major changes impact applications submitted for due dates on or after January 25, 2018.

- Applicants are required to use FORMS-E. Wondering what this means for late applications or reviewers submitting under the continuous submission policies? See NIH Guide Notice [NOT-OD-17-062](#) to learn more.
- Applications that include one or more clinical trials must be submitted in response to funding opportunity announcements that allow for clinical trials. See NIH Guide Notice [NOT-OD-18-106](#) to learn more.

- **Cold Weather Blues? Think Spring and the 2018 NIH Regional Seminar in Washington, D.C.**

Are you an investigator or research administrator new to working with the NIH grants process? If so, then don't let the [2018 NIH Regional Seminar on Program Funding and Grants Administration](#) pass you by. Registration is underway for the spring seminar in Washington, D.C. (May 2-4). With only seminar planned for 2018, you won't want to miss your opportunity to participate (Hint: these seminars routinely reach capacity prior to the event.)

Kick off your NIH Regional Seminar experience by attending one or two of the [optional pre-seminar half-day workshops](#), such as Intellectual Property and iEdison, electronic Research Administration (eRA), or an

Administrator's Boot Camp. As a full-day option, the and the NIH have collaborated to offer a workshop on Human Research Protections that is designed to help you get through the IRB approval process with skill.



[Continue reading...](#)

- **New Electronic Submission Requirement for Diversity Supplements**

The funds provided in response to Diversity Supplement requests are used to improve the diversity of the biomedical research workforce by recruiting and supporting students, postdoctorates, and eligible investigators from groups that have been shown to be underrepresented in health-related research. Currently, NIH does not require that diversity supplements be submitted electronically, which poses a challenge to NIH staff when trying to identify and track diversity supplement awardees and their subsequent research careers.

Effective January 25, 2018, all single and multi-project diversity supplement requests **MUST** be submitted electronically ([NOT-OD-18-111](#)).

Our diversity supplement funding opportunity announcement will be reissued with FORMS-E application forms and instructions on January 25, 2018 ([NOT-OD-17-062](#)). Until then, requests can be prepared using our current [FORMS-D diversity supplement](#) FOA. This FOA will expire on February 25, 2018 and all subsequent requests must use the new FORMS-E FOA.

[Continue reading...](#)

- **2018 NIH Regional Seminar in Washington, DC – Rates Increase on December 16!**

If you are new to working with the NIH grants application and awards process....you need to read on! With only one NIH Regional Seminar on Program Funding and Grants Administration scheduled for 2018, you will not want to miss out on this unique opportunity in [Washington, DC, from May 2-4, 2018](#).



**Why Attend?** The NIH Regional Seminar involves approximately 65 NIH and HHS staff who are brought to a central location in order to educate, share, and hear your questions over the course of two days, plus pre-seminar workshops. There are over 45 different topic areas and 6 optional workshops covering human subjects, electronic research administration, a “boot camp” for beginners, and intellectual property. See the [two day seminar & pre-seminar workshop agendas](#) for more details.

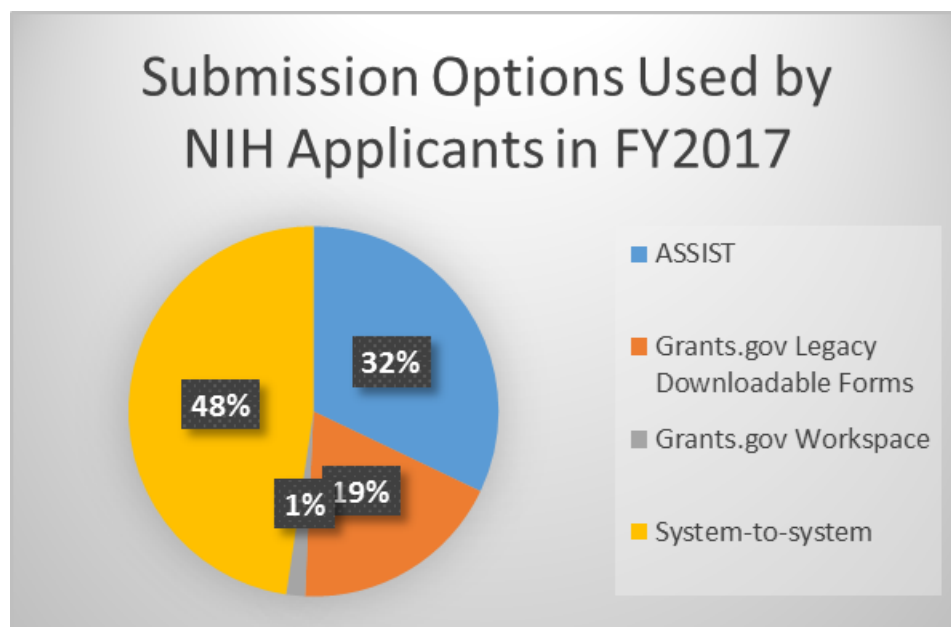
[Continue reading...](#)

#### • Retirement Countdown for Grants.gov Legacy Downloadable Forms

On December 31, 2017 Grants.gov will no longer allow applicants to download an entire application form package as a single PDF for offline data entry and later submission. For the 80% of NIH applicants that used [ASSIST](#) or institutional system-to-system solutions in FY2017, this change will have little impact. Die-hard downloadable forms users, however, need to switch to another submission option quickly.

Consult with your Office of Sponsored Research or whoever is in charge of submitting grants for your organization to determine which of the remaining options (ASSIST, institutional system-to-system solutions, or [Grants.gov Workspace](#)) is the best fit.

Our [Submission Options](#) page can help you compare features and considerations for each choice. If there is no business reason to choose one option over another, give NIH’s [ASSIST](#) a try. It’s a user-friendly, online solution optimized for NIH applications.





## New Resources

---

- **Two New “All About Grants” Podcasts: 2018 Appendix Policy Changes, and Why We Encourage You to Submit Your Application Early**

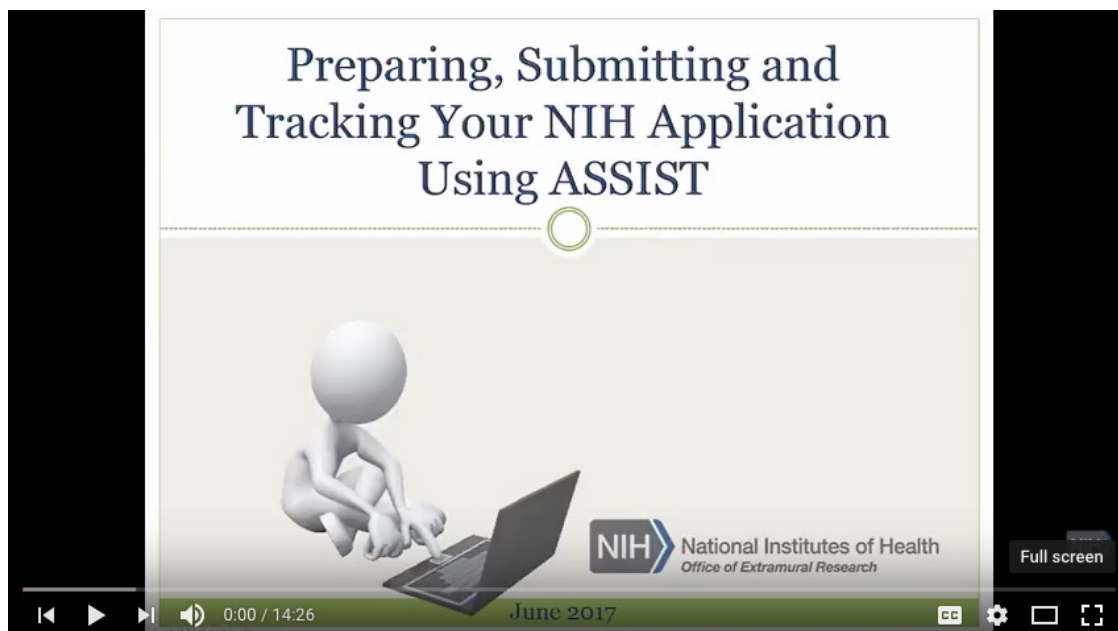
NIH’s Office of Extramural Research brings you two new “[All About Grants](#)” podcasts to ring in the new year. In “Why it’s so Important to Submit Applications Early” ([mp3](#), [transcript](#)), Dr. Cathie Cooper, director of the Division of Receipt and Referral in the [NIH’s Center for Scientific Review](#), talks about the importance of submitting application early due to changes in NIH’s policies and application forms for 2018.

In “Changes to the NIH Appendix Policy for 2018” ([mp3](#), [transcript](#)), Dr. Cooper joins us again to talk about the NIH appendix policy and new limits on what can be included as appendices.

All About Grants podcast episodes are produced by the NIH Office of Extramural Research, and designed for investigators, fellows, students, research administrators, and others just curious about the application and award process. The podcast features NIH staff members who talk about the ins and outs of NIH funding, and provide insights on grant topics from those who live and breathe the information. Listen to more episodes via the [All About Grants podcast page](#), [through iTunes](#), or by using [our RSS feed](#) in your podcast app of choice.

- **Resources Available for Preparing Your Application Using ASSIST**

Our new [Preparing Your Application Using ASSIST](#) page provides step-by-step guidance for navigating the submission process using ASSIST, NIH’s online submission system for the preparation, submission and tracking of grant applications to NIH. It includes short video tutorials for using key ASSIST features, quick start guides, online user documentation, FAQs, presentations and more. Whether you are an ASSIST novice or pro, you’re sure to find some useful nuggets to improve your application submission experience.





**MyNRMN** is a powerful social networking platform for students and researchers across the biomedical, behavioral, social, and clinical sciences to connect with one another for anything from general questions about research and professional development as a scientist to scheduling more formal mentorship appointments one-on-one or as a group.



Accessible when you [log in to your profile](#) on NRMNet, **MyNRMN** allows you to:

- Browse profiles of registered NRMN mentors and mentees from around the country
- Build your network by connecting with mentees and mentors that share interests with you
- Send direct messages to your connections (SMS and posts)
- Share documents
- Build your CV using the CV Builder tool (for mentees)
- Set appointments with your mentee/mentor through your personalized calendar
- Invite new mentees/mentors to the NRMN network to connect with you

**Haven't registered yet?** [Click here](#) to create your NRMNet profile and start building your network with **MyNRMN** today!

Join us this **Wednesday January 24th at 1 pm EST/ 12 pm CST/ 10 am PST** to learn more about [MyNRMN - the networking and collaboration platform from NRMN](#). This 30 minute webinar will introduce you to current and new features, and allows for an opportunity to engage in a 10 minute Q&A session.

Click the link below to register for the date and time that works best for you.

<https://attendee.gotowebinar.com/rt/6250325968579817219>

What to expect:

- Mentor/mentee onboarding
- Recommended members and groups
- Status updates
- Find a Mentor
- Advance Search and Filter
- Making Connections
- Messaging
- My Groups
- Help!

Thank you!

MyNRMN Team



---

Copyright © LBRN

Want to change how you receive these emails?  
You can [update your preferences](#) or [unsubscribe from this list](#).

---

This email was sent to [nykim@cct.lsu.edu](mailto:nykim@cct.lsu.edu)  
[why did I get this?](#) [unsubscribe from this list](#) [update subscription preferences](#)  
LSU · Louisiana State University · 2017 Digital Media Center · Baton Rouge, La 70803 · USA

MailChimp