

News, Opportunities and Deadlines for December 2017



2018 LBRN Annual Meeting

Louisiana Biomedical research Network presents

LBRN 16TH ANNUAL MEETING



JANUARY 26–28, 2018
Register at lbrn.lsu.edu/events/annual-meeting

LSU HEALTH SCIENCES CENTER IN SHREVEPORT 1501 Kings Hwy, Shreveport, LA 71103	Awards and prizes will be given for the best oral and poster presentations including full and pilot projects and graduate and undergraduate student research.
ALL DEADLINES ARE JANUARY 5TH, 2018	Registration, hotel reservations, and mandatory submission of all abstracts for both oral and poster presentations

The 2018 LBRN Annual Meeting will be held at the LSU Health Sciences Center in Shreveport.

Please see below for additional information.

- What: **2018 LBRN Annual Meeting**
- When: **January 26 – 28, 2018**
- Where: **LSU Health Shreveport**

Additional information is in the [LBRN webpage](#). Please check the LBRN website periodically for additional information.

6th Annual LA Conference on Computational Biology & Bioinformatics



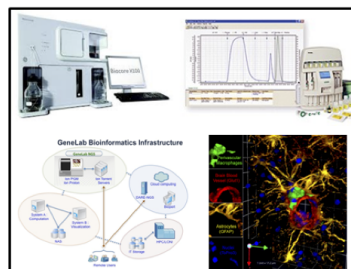
LBRN Annual Magazine - 2017



Louisiana Biomedical Research Network

The [Louisiana Biomedical Research Network \(LBRN\)](#) program is a NIH funded program that aims to increase the quality and quantity of biomedical research activities throughout the State of Louisiana with an emphasis on building research capacity and workforce development. The LBRN program currently supports seven Predominantly Undergraduate Institutions, including three HBCUs, and partnering with Louisiana's IDEa-CTR the Louisiana Clinical and Translational Science Center (LA CaTS) to provide translational research opportunities for PUI faculty.

- The LSU Flagship provides state of the art core services in the field of Bioinformatics Biostatistics and Computational Biology, by providing training and access via the LONI network to High-end **Bioinformatics and High Performance Computing** servers such as the Delta Computer and the Super Mic. The Molecular Cell Biology Research Resources core provides, training, access to state of the equipment for carrying out molecular biology research including **High-end Confocal Microscopy, FACS and Electron Microscopy and NexGen Sequencing**.



- The LBRN has supported more than **65** individual Faculty Led Research projects since 2010, resulting in more than **350** research Presentations and Publications.



- Since 2010, the LBRN Summer Research Program has supported more than **40 Faculty members, 50 Graduate Students** and **237 Undergrad students**.





The BBC Core provides introductory educational lecture series on informatics topics that are recorded and streamed. Prior offerings that are available for on demand streaming include;

- An Introduction to Computers and Informatics in the Health Sciences

<http://metagenomics.lsuhsu.edu/lectures/introinformatics/>

- An Introduction to Microbial Community Sequencing and Analysis

<http://metagenomics.lsuhsu.edu/lectures/intromicrobiota/>

On demand streaming links are available by each lecture along with downloadable lecture slides.

LONI HPC Allocation for LBRN



We are happy to announce that High Performance Computing allocation for supporting LBRN/BBC Core community from the LONI HPC system.

This can be utilized in lieu of individual investigators having to apply for and acquire their own allocations to access the HPC resources. If any of your campus members need access to high performance computing, please have them interface with [Dr. Nayong Kim](#).

CFA for Short Term Core Projects



Molecular Cell Biology Research Resources Core (**MCBRC**) and Bioinformatics, Biostatistics, and Computational Biology Core (**BBCC**) are calling for proposals to carry out short term projects in collaboration with the Cores. All LBRN researchers can submit a proposal for a defined project that can be carried out in collaboration with the Core facilities listed in the attached Call for Proposals (CFP) on a competitive basis. Each selected project will be allocated \$1,500 to fully or partially offset Core expenses. More details can be found in the attached CFP.

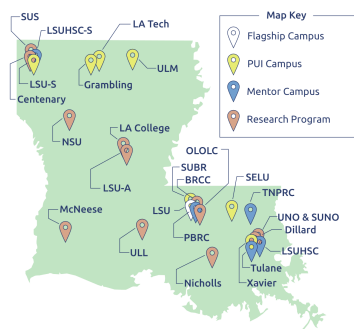
[More details can be found in the attached CFP.](#)

LBRN Call for Proposals



The purpose of this release is to solicit Letters of Intent for new project proposals to be funded by the LBRN. The RFAs for each funding programs listed here can be accessed using the clicking on the respective title. The expected start date for these projects is **May 1, 2018**. The selection and distribution of these projects by the Steering Committee will be based on the quality of the proposal and the needs of the LBRN program. Proposed projects should be consistent with the program's focal research areas. All interested researchers are

encouraged to contact Dr. Ramesh Subramanian ramji@lsu.edu prior to submitting a proposal to ensure that the proposed research is eligible for inclusion in this program. The letter of intent should be submitted using the LBRN-InfoReady-Review online form (use the links below) no later than 4:30 pm on September 11, 2017. **Only those applicants who submit the LOI will be able to submit a proposal.**



RFAs (click on title to download proposal information)

- [1. Letter of Intent for LBRN Full Projects 2018-2021](#)
 - [2. Letter of Intent for LBRN Pilot Projects 2018-2019](#)
 - [3. Letter of Intent for LBRN Shared Instrumentation 2018-2019](#)
 - [4. Letter of Intent for LBRN Startup Projects 2018-2020](#)
 - [5. Letter of Intent for LBRN Translational Projects 2018-2019](#)
-

National Research Mentoring Network



MyNRMN is a powerful social networking platform for students and researchers across the biomedical, behavioral, social, and clinical sciences to connect with one another for anything from general questions about research and professional development as a scientist to scheduling more formal mentorship appointments one-on-one or as a group.



Accessible when you [log in to your profile](#) on NRMNet, **MyNRMN** allows you to:

- Browse profiles of registered NRMN mentors and mentees from around the country
- Build your network by connecting with mentees and mentors that share interests with you
- Send direct messages to your connections (SMS and posts)
- Share documents
- Build your CV using the CV Builder tool (for mentees)
- Set appointments with your mentee/mentor through your personalized calendar
- Invite new mentees/mentors to the NRMN network to connect with you

Haven't registered yet? [Click here](#) to create your NRMNet profile and start building your network with **MyNRMN** today!

Join us this **Thursday December 14th at 1 pm EST/ 12 pm CST/ 10 am PST** to learn more about [MyNRMN - the networking and collaboration platform from NRMN](#). This 30 minute webinar will introduce you to current and new features, and allows for an opportunity to engage in a 10 minute Q&A session.

Click the link below to register for the date and time that works best for you.

<https://attendee.gotowebinar.com/rt/1113175644098027523>

What to expect:

- Mentor/mentee onboarding
- Recommended members and groups
- Status updates
- Find a Mentor
- Advance Search and Filter
- Making Connections
- Messaging
- My Groups
- Help!

- **Be Careful to Pick the Right Funding Opportunity Announcement (FOA)**

Recent policy changes requiring clinical trial applications to be submitted to FOAs that specifically allow clinical trials, first [announced](#) in fall of 2016, impact how **all** NIH applicants choose a FOA, whether you are submitting a clinical trial or not.

Over the last year, each NIH Institute and Center has been carefully evaluating its research funding priorities and strategic goals and using that information to articulate their funding priorities for clinical trials. They are communicating their priorities through the funding opportunity announcements they issue.

The requirement to respond to clinical trial specific FOAs begins for applications submitted for due dates on or after January 25, 2018. NIH is reissuing any FOA that will accept clinical trial applications after that date. Many of these FOAs have already been issued, others will be published at least 60 days before the first due date for which they will accept applications. How can you tell which FOAs will allow clinical trials? Reissued clinical trial FOAs make clinical trial allowability clear in both the title and in section 2, and they include [clinical trial review criteria](#).

[...Continue reading](#)

Top Stories

- **NIH Single IRB Policy Reminder**

As we approach the implementation date for NIH's Policy on the Use of a Single Institutional Review Board (Single IRB) for Multi-Site Research, we would like to remind you of the resources available for understanding this policy.

The policy affects multi-site studies involving non-exempt human subjects research funded by NIH, and applies to grant applications with due dates on or after January 25, 2018 and R&D contracts in response to solicitations issued on or after January 25, 2018.

We encourage you to familiarize yourself with the single IRB plan, considerations in the selection of the sIRB, costs, exceptions to the policy, and where you should include this information as part of your grant application or contract proposal.

Visit the following resources to learn more... [Continue reading](#)

- **2018 NIH Regional Seminar in Washington, DC – Rates Increase on December 16!**

If you are new to working with the NIH grants application and awards process...you need to read on! With only one NIH Regional Seminar on Program Funding and Grants Administration scheduled for 2018, you will not want to miss out on this unique opportunity in [Washington, DC, from May 2-4, 2018](#).



Why Attend? The NIH Regional Seminar involves approximately 65 NIH and HHS staff who are brought to a central location in order to educate, share, and hear your questions over the course of two days, plus pre-seminar workshops. There are over 45 different topic areas and 6 optional workshops covering human subjects, electronic research administration, a “boot camp” for beginners, and intellectual property. See the [two day seminar & pre-seminar workshop agendas](#) for more details.

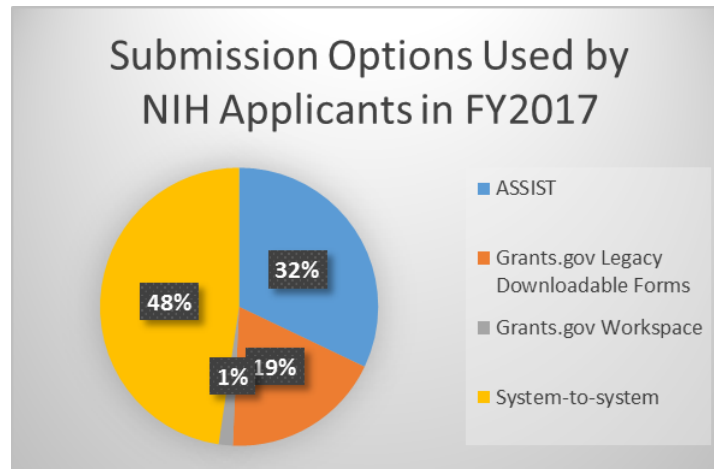
[Continue reading...](#)

- **Retirement Countdown for Grants.gov Legacy Downloadable Forms**

On December 31, 2017 Grants.gov will no longer allow applicants to download an entire application form package as a single PDF for offline data entry and later submission. For the 80% of NIH applicants that used [ASSIST](#) or institutional system-to-system solutions in FY2017, this change will have little impact. Die-hard downloadable forms users, however, need to switch to another submission option quickly.

Consult with your Office of Sponsored Research or whoever is in charge of submitting grants for your organization to determine which of the remaining options (ASSIST, institutional system-to-system solutions, or [Grants.gov Workspace](#)) is the best fit.

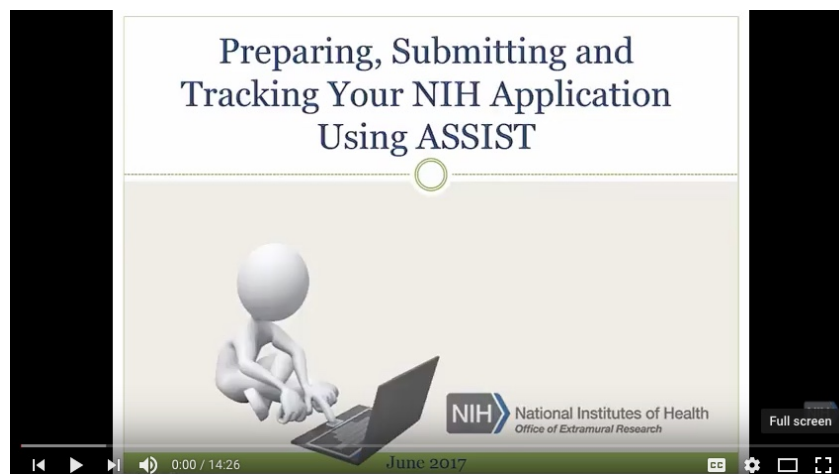
Our [Submission Options](#) page can help you compare features and considerations for each choice. If there is no business reason to choose one option over another, give NIH's [ASSIST](#) a try. It's a user-friendly, online solution optimized for NIH applications.



New Resources

- **Resources Available for Preparing Your Application Using ASSIST**

Our new [Preparing Your Application Using ASSIST](#) page provides step-by-step guidance for navigating the submission process using ASSIST, NIH's online submission system for the preparation, submission and tracking of grant applications to NIH. It includes short video tutorials for using key ASSIST features, quick start guides, online user documentation, FAQs, presentations and more. Whether you are an ASSIST novice or pro, you're sure to find some useful nuggets to improve your application submission experience.



Copyright © LBRN

Want to change how you receive these emails?
You can [update your preferences](#) or [unsubscribe from this list](#).

This email was sent to pykim@cct.lsu.edu
[why did I get this?](#) [unsubscribe from this list](#) [update subscription preferences](#)
LSU · Louisiana State University · 2017 Digital Media Center · Baton Rouge, La 70803 · USA

MailChimp